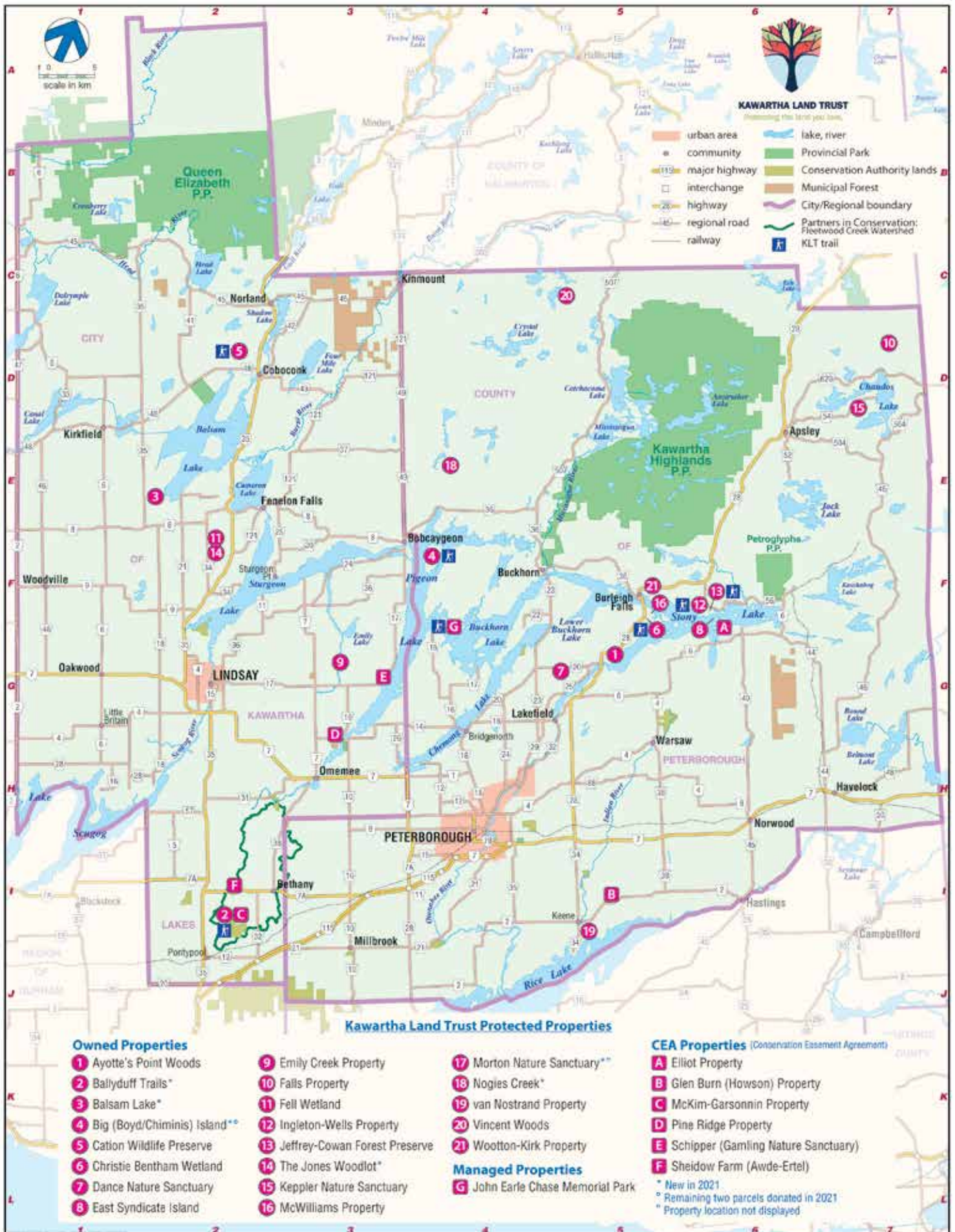




KAWARTHA LAND TRUST

Protecting the land you love.

2021 | ANNUAL REPORT



Contents

Our Impact.....	4	Big (Boyd/Chiminis) Island Parcels.....	14
Our Mission and Vision	5	Partners in Conservation.....	16
Our Values	5	Looking Ahead.....	17
Our Work in 2021	6	Celebrating Our Supporters	18
Newly Protected Properties:		Recognizing Our Donors	19
The Jones Woodlot	7	Properties.....	22
Nogie’s Creek & Balsam Lake	8	Financial Summary	25
Morton Nature Sanctuary	10	Our Team.....	26
Conversion of Ballyduff Trails	12		

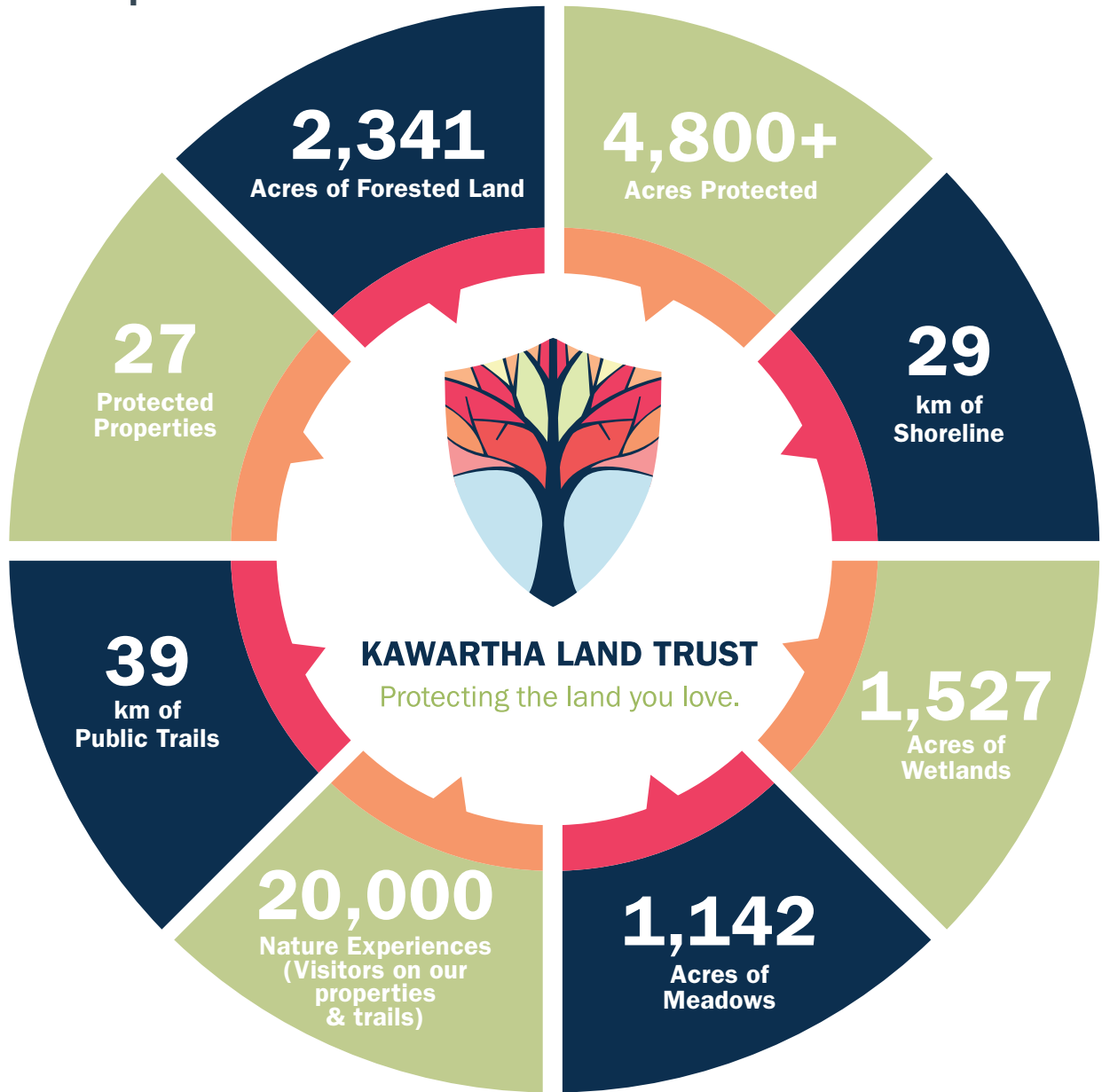
We respectfully acknowledge that Kawartha Land Trust is located within Treaty 20 Michi Saagiig Anishnaabeg territory on the traditional homelands and territory of the Michi Saagiig and Chippewa Nations, collectively known as the Williams Treaties First Nations, which include: Curve Lake, Hiawatha, Alderville, Scugog Island, Rama, Beausoleil, and Georgina Island First Nations.

We offer our gratitude to First Nations — the stewards and caretakers of these lands and waters for millennia and for generations to come — for their care for, and teachings about, our earth and our relationship to it.

Kawartha Land Trust strives to honour these teachings through stewardship and respect for the land we protect. We hope to continue and expand our collaborations with First Nations and our engagement and honouring of the Nations across this region.



Our Impact



1,063
Acres of Provincially Significant Wetland

2,296
Acres of Kawarthas Naturally Connected Land

2,136
Acres of Area of Natural and Scientific Interest

Our Mission & Vision

Kawartha Land Trust

Kawartha Land Trust (KLT) is the only non-government charitable organization committed to environmental conservation in the Kawarthas.

KLT actively protects and cares for 27 properties, comprising over 4,800 acres of land in the Kawarthas. We conserve distinct and valuable ecosystems in the region for the benefit of all.

We do this by accepting donations of land and/or interests in land and by engaging the community in support of our work to ensure these lands are cared for in perpetuity.

Like you, KLT's supporters, volunteers, and staff value a healthy environment. Together, we can work to protect important natural spaces in the Kawarthas!

Our Values

Conservation: Land conservation and protection of heritage matters deeply to people who live in the Kawarthas and beyond. The natural environment in this region has attracted people and sustained life since time immemorial. We acknowledge and honour the land stewardship of previous and current generations in protecting and caring for healthy and diverse ecosystems that support quality of life today. We are committed to making conservation efforts permanent by protecting and caring for ecologically important lands and the connections between those lands, so that current and future generations can thrive.

Collaboration: We know that working collaboratively can achieve greater impact. To protect a deeply-connected landscape we need a mix of privately and publicly protected lands, private land stewardship, and supportive government policy. We actively nurture relationships with volunteers, donors, staff, and community partners whose mandates and undertakings complement our own. We value collaborations that are built on trust, respect, and accountability to each other and the land we protect.

Our Vision

A future where 30% of the Kawartha Region is characterized by protected natural spaces and connections that support health and representative ecosystems and landscapes.

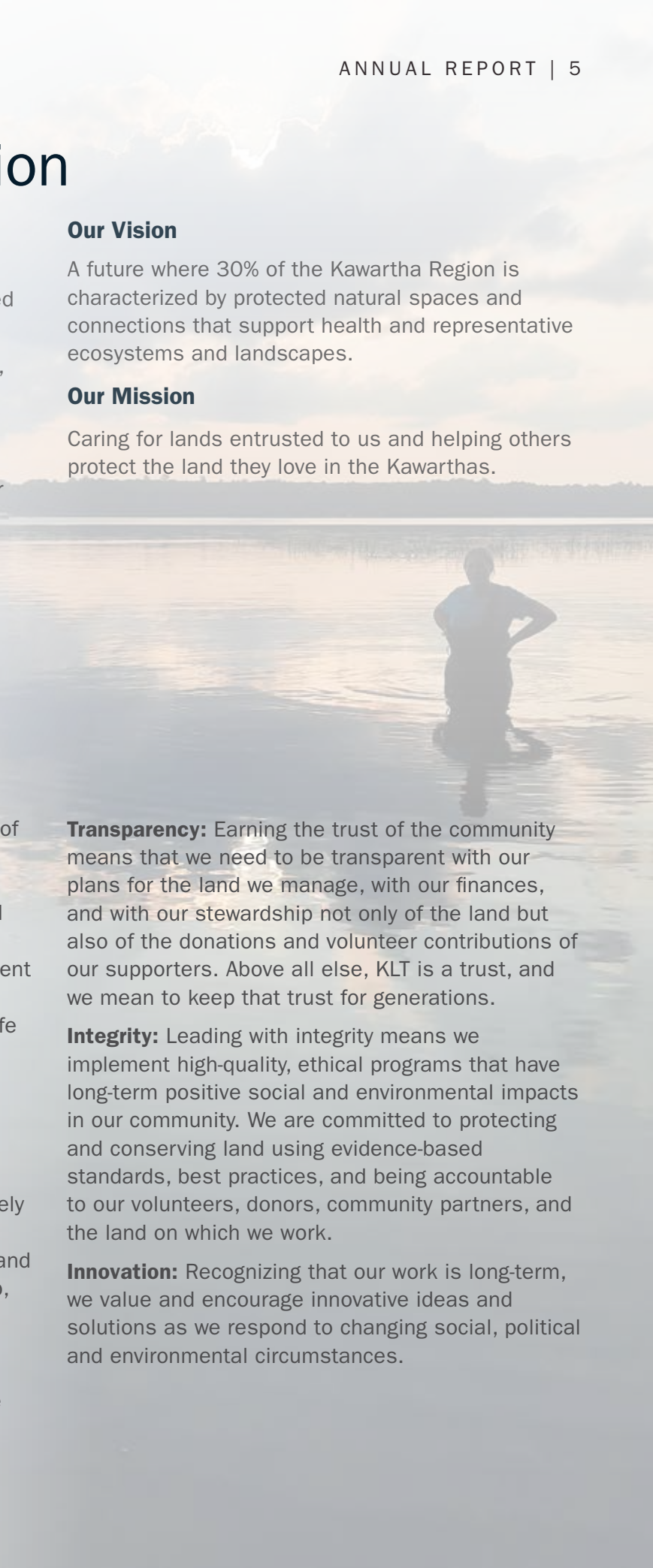
Our Mission

Caring for lands entrusted to us and helping others protect the land they love in the Kawarthas.

Transparency: Earning the trust of the community means that we need to be transparent with our plans for the land we manage, with our finances, and with our stewardship not only of the land but also of the donations and volunteer contributions of our supporters. Above all else, KLT is a trust, and we mean to keep that trust for generations.

Integrity: Leading with integrity means we implement high-quality, ethical programs that have long-term positive social and environmental impacts in our community. We are committed to protecting and conserving land using evidence-based standards, best practices, and being accountable to our volunteers, donors, community partners, and the land on which we work.

Innovation: Recognizing that our work is long-term, we value and encourage innovative ideas and solutions as we respond to changing social, political and environmental circumstances.



Our Work in 2021

Thanks to amazing supporters like you, Kawartha Land Trust (KLT) successfully protected an additional five properties in 2021! Because of your help, we now protect in perpetuity 27 properties comprising over 4,800 acres of ecologically significant land.

While 2021 saw the cancellation of many public gatherings and events due to COVID-19 restrictions, KLT's public trails offered respite for individuals and families to de-stress in nature throughout the second year of the global pandemic.

Regrettably, our 3rd Annual Traditional Indigenous Medicine Walk and our 2nd Annual Manoomin Harvesting event were cancelled due to COVID-19. However, KLT continued to engage in collaborations with Indigenous knowledge-keepers, and we look forward to resuming these events in 2022.

Despite being physically distanced from amazing supporters like you, our shared passion for conservation continued to bring us closer as members of a powerful movement. Together, we are protecting the land you love!

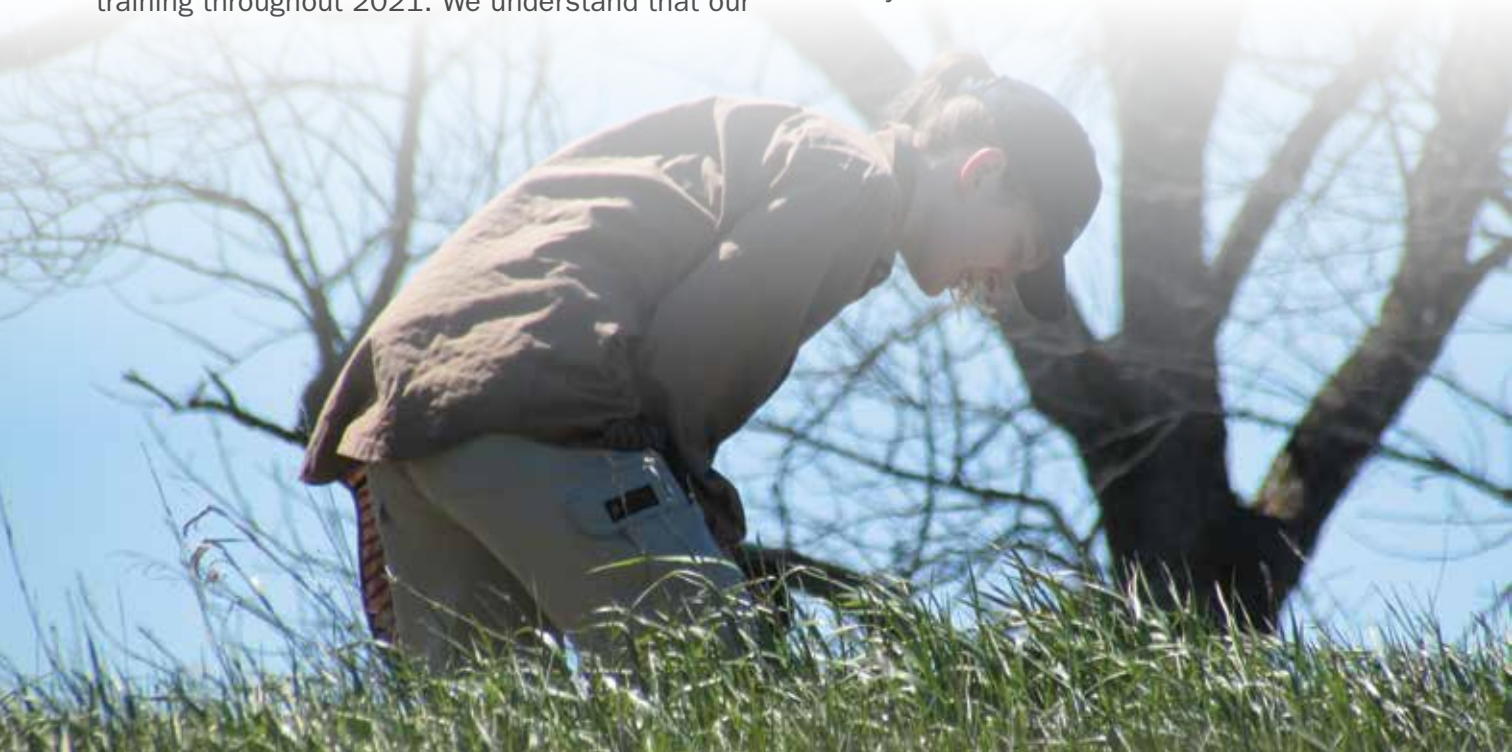
We believe that the ways we engage our work are equally important to the amazing conservation results we achieve. As such, KLT staff and trustees engaged in extensive Diversity, Equity, and Inclusion training throughout 2021. We understand that our

conservation work will vastly improve if we continue to cultivate an organizational culture of belonging.

KLT's Partners in Conservation Program continued to work with landowners to support stewardship initiatives. Working with community partners, Kawartha Conservation, and local landowners, the program successfully rebuilt a culvert in the Fleetwood Creek Watershed region to support cold-water fish spawning.

Our land stewardship team was able to continue their important work on KLT properties and beyond, managing invasive species and undertaking garbage cleanup days at several protected properties, collecting tallgrass prairie seeds and planting trees and shrubs at Ballyduff Trails, planting Blue Vervain and White Pines at John Earle Chase Memorial Park, installing trail posts with QR codes at Ingleton-Wells, blazing two new trails at Christie Bentham Wetland, conducting species at risk surveys for the Eastern Whip-poor-will and a number of turtles and frogs, and conducting a shoreline classification survey at Stony and Clear Lakes. All in all, it was a busy and productive year.

2021 was a year of remarkable conservation outcomes for Kawartha Land Trust (KLT). We could not have done it without you! Thank you for making last year a success.



New KLT Property: The Jones Woodlot



Thanks to supporters like you, the KLT Jones Woodlot is protected forever!

This 50-acre property is located directly adjacent to Kawartha Land Trust's Fell Wetland property. KLT has doubled the amount of protected land in this Provincially Significant Wetland. **But we couldn't have done it without supporters like you!**

With your support, siblings Ross Jones and Marilyn Falls donated the property on behalf of their parents, Clifford and Ruth Jones. It has been in the Jones family since 1946 when Ross and Marilyn's grandfather, John Jones, bought the land and called it "The Woodlot."

Ross and Marilyn knew they wanted to pass their beloved family property on, but they did not want a buyer to destroy the natural elements of their land. The ecological integrity of the entire Martin Creek swamp area is already threatened by the extractive industry.

Thanks to supporters like you, Ross and Marilyn were able to protect their family woodlot from the risk of development and biodiversity loss by donating it to KLT.

The Jones Woodlot is now protected forever! Ross and Marilyn's generosity — and your support — allows KLT to ensure the property will continue to provide habitats and critical land to many species at risk for generations to come.

To honour our long-term protection goals for the features of this ecologically significant land, this property will not be open for public access. Please visit our properties pages to discover which KLT-protected properties have trails and are open for you to explore.

Unique ecological features:

- ▶ Mixed swamp, Cattail, and Willow marsh
- ▶ Upland forest dominated by White Ash, Sugar Maple and Basswood
- ▶ Adjacent to the Fell Wetland system, contributing to the connectivity and biodiversity throughout an otherwise highly disturbed agricultural landscape
- ▶ Over 25 species of birds noted in the system including the Northern Flicker, Black-billed Cuckoo, and Eastern Bluebird

New KLT Properties: Nogie's Creek & Balsam Wetland

Two Threatened Wetlands Now Under Permanent KLT Protection

Supporters like you helped Kawartha Land Trust (KLT) work with Kawartha Conservation to ensure two threatened wetlands on Nogie's Creek and Balsam Lake are protected forever.

When the two properties did not fit Kawartha Conservation's mandate, you were there to help KLT receive the donated properties to ensure their permanent protection.

The 100-acre Nogie's Creek Property sits six kilometres north of the mouth of the creek and is only accessible by water.

The property has been identified as a very important piece of land in the natural landscape, not only because of its critical ecological features, but also because of its location.

Ontario Nature's "Your Protected Places" initiative identified Crown Land in this area as an important corridor between Kawartha Highlands Provincial Park and Queen Elizabeth Wildlands Provincial Park. The Nogie's Creek property abuts this important section of Crown Land.

The ecosystems on the property are in good health with mixed habitat types that are used by permanent and migratory species including species at risk and species of interest.



Property ecosystems:

- ▶ Dry mixed forests dominated by Oak, Maple, and Hemlock Species in the South
- ▶ Fresh mixed forests dominated by Maple, Birch, Ash, and Cedar in the central portion
- ▶ Mixed treed/open wetlands in the north

Species at risk and other wildlife:

- ▶ Eastern Wood-pewee
- ▶ Black Ash Trees
- ▶ Moose
- ▶ Black bears
- ▶ White-tailed Deer

This project was made possible by the Government of Canada through the Natural Heritage Conservation Program, part of Canada's Nature Fund. The Government of Canada's Natural Heritage Conservation Program (NHCP) is a unique public-private partnership to support new protected and conserved areas by securing private lands and private interests in lands. The program is managed by the Nature Conservancy of Canada (NCC). Federal funds invested in the program are matched with contributions raised by NCC and its partners, Ducks Unlimited Canada and the country's land trust community.

This project was undertaken with the financial support of:
Ce projet a été réalisé avec l'appui financier de :



Environment and
Climate Change Canada

Environnement et
Changement climatique Canada





The 72-acre Balsam Lake Property sits within a Provincially Significant Wetland that provides excellent habitat for rare and at-risk species.

The parcel includes 450 metres of natural shoreline along Balsam Lake. It is also close to other KLT-protected properties including Fell Wetland, Jones Woodlot, and Cation Wildlife Preserve.

Most of the property is identified by the Kawarthas Naturally Connected Collaborative, indicating its importance as a core ecological feature that links natural heritage systems.

The property is a patchwork of shallow, slow-moving watercourses, and temporary water bodies that weave through a variety of unique wetland ecosystems.

Property ecosystems:

- ▶ Cattail marsh that abuts Balsam Lake
- ▶ The marsh slowly transitions into treed swamp ecosystems that are found on the rest of the property

Notable species:

- ▶ Eastern Wood-pewee
- ▶ Common Snapping Turtles
- ▶ Black Ash Trees
- ▶ Property identified as a significant wildlife habitat (winter deer yard) by government biologists

This project was made possible by the Government of Canada through the Natural Heritage Conservation Program, part of Canada's Nature Fund. The Government of Canada's Natural Heritage Conservation Program (NHCP) is a unique public-private partnership to support new protected and conserved areas by securing private lands and private interests in lands. The program is managed by the Nature Conservancy of Canada (NCC). Federal funds invested in the program are matched with contributions raised by NCC and its partners, Ducks Unlimited Canada and the country's land trust community.

This project was undertaken with the financial support of:
Ce projet a été réalisé avec l'appui financier de :



Environment and
Climate Change Canada

Environnement et
Changement climatique Canada



New KLT Property Home to Species at Risk: Morton Nature Sanctuary

The closing months of 2021 resulted in extremely positive news for Kawartha Land Trust (KLT) and its supporters in land conservation — Dr. Patricia Morton and David Morton generously donated the 133-acre Morton Nature Sanctuary to KLT to ensure this ecologically significant property is protected forever.

The Mortons chose to donate the property to KLT in order to safeguard its dense natural forests from logging and ensure the preservation of habitat for the abundance of wildlife that lives there.

“I think it is especially important to protect our forest for the sake of its sequestering of carbon and tremendous environmental benefits,” said Dr. Patricia Morton. “And, especially, for the sake of all of the wonderful habitat, wildlife, and ecosystems that it sustains.”

The Morton Nature Sanctuary lies within “The Land Between” landscape zone, an ecosystem of interest due to its unique, transitional habitat that incorporates features of the St. Lawrence Lowlands and the Precambrian Shield and contains a high diversity of flora and fauna.

The heavily-treed Sanctuary supports two major forest types: Sugar Maple-dominated deciduous forest and a mature Hemlock-dominated mixed

forest that also features large Red and White Pines. Throughout the rolling landscape, exposed, fractured granite is visible. The property’s deep valleys are home to vernal pools that support frogs and salamanders in the region.

The donation of this property by the Mortons ensures the preservation of critical habitats for species at risk like the Eastern Wood-pewee and Eastern Ribbonsnake. Its remarkable, extensive natural shoreline and undisturbed forests provide habitats for migratory birds and for other species for feeding and breeding.

“I love it that the Morton Nature Sanctuary provides habitat for bears and much wildlife, including lynx, deer, and also moose,” said Dr. Morton. “And I love that this property contains hidden, shallow little bays and many wetlands that are such rich habitat and, like the forest, comprise natural carbon ‘sinks’ that are vital to curbing climate change.”

KLT and its donors, volunteers and supporters thank the Mortons for their generous donation of this important nature sanctuary.

At the request of the donors, the Morton Nature Sanctuary will not be open to public access and its location will not be disclosed in order to ensure the preservation of its sensitive habitats.





Interesting Features:

- ▶ Almost 60% of the property falls within the Kawarthas Naturally Connected natural heritage system
- ▶ Features 1.5 kilometres of undeveloped, natural shoreline, which contributes to water quality and providing key habitat and shelter to wildlife in the area
- ▶ Wide variety of mature trees on the property including stands of Sugar Maple and Hemlock

Conversion of Ballyduff Trails

Thanks to your support, Ballyduff Trails is KLT-owned forever!

In 2011, Ralph McKim and Jean Garsonnin protected their 240-acre property with a Conservation Easement Agreement (CEA) with Kawartha Land Trust (KLT).

In 2021, thanks to supporters like you, KLT was able to accept a significant portion of the McKim-Garsonnin property through a fee-simple donation.

With your support, the 150-acre portion of the property containing the Ballyduff Trails was transferred to KLT ownership in perpetuity. The remaining McKim-Garsonnin property will continue to be protected through the CEA.

The couple purchased the property, where they built their home, over 20 years ago. Ever since they learned about the ecological importance of their land, Ralph and Jean have been dedicated to protecting, restoring, and sharing the natural beauty of their property.

As part of the glacially formed Oak Ridges Moraine, the property contains a wetland that is the source of a cold-water stream at the headwaters of

Fleetwood Creek. The ecologically significant land borders the 900-acre Fleetwood Creek Natural Area.

With your help, KLT restoration projects of forest and native tallgrass prairie ecosystems have optimized the ecological health of the land.

Ralph and Jean are thrilled to know the property will remain open to the public as a place to experience and learn about the beauty and significance of this special place.

Please visit kawarthalandtrust.org to learn more about pre-arranging a visit to the McKim-Garsonnin property.

Distinct, glacially-formed Oak Ridges Moraine features:

- ▶ Rolling hills
- ▶ Sand deposits
- ▶ A ridge of rocks (esker) left behind by an ancient river
- ▶ A wetland that is the source of an ever-bearing stream feeding into the Kawartha Lakes system





The property has been secured with the support of the Government of Ontario through the Greenlands Conservation Partnership, which helps conserve ecologically important natural areas and protect wetlands, grasslands and forests that help mitigate the effects of climate change. Through the Greenlands Conservation Partnership, a total of \$50 million will be invested over four years, including \$20 million from the Ontario government, and another \$30 million from other sources, such as individual donations and foundation support through the Nature Conservancy of Canada (NCC) and the Ontario Land Trust Alliance, and other levels of government.



100% KLT-Protection for Big (Boyd/Chiminis) Island

KLT now protects 100 percent of the largest island in the Kawartha Region — but we couldn't have done it without people like YOU!

Supporters like you helped Kawartha Land Trust (KLT) say “YES” when Mike Wilson offered to donate most of Big (Boyd/Chiminis) Island to KLT in 2015.

Our amazing supporters helped raise \$1 million — a remarkable fundraising campaign — to secure and care for the ecologically significant island.

At that time, Mike and his family kept ownership

of two parcels of land on the island in case they wanted to build a cottage there in the future.

Last year, supporters like you were there again, along with KLT's community partner Jo Anne's Place, to raise even more funds to help secure the last two parcels on the island.

The Wilson family recently donated the last two parcels to KLT! Thanks to their generosity — and your support — KLT now protects the entire island in perpetuity!

For millennia, the island has served as a meeting and harvesting place for First Nations. The land holds significant cultural value for Curve Lake First Nation and will for future generations to come.

In 2020, supporters like you made it possible for KLT to offer our first ever Manoomin Harvesting Event on Big (Boyd/Chiminis) Island.

Led by Caleb Musgrave of Canadian Bushcraft, over 25 participants learned how to harvest (Bawa'am) wild rice (Manoomin) with ricing sticks (Bawa'iganaak) and later learned Manoominike-giizis, the process of preparing and cooking Manoomin.

While KLT's 2nd Annual Manoomin Harvesting Event was regrettably cancelled last year, we look forward to resuming this important work on Big (Boyd/Chiminis) Island in 2022.

Thanks to you, the entirety of this beautiful island will be protected forever!

Unique ecological features:

- ▶ Large hardwood trees: Butternut, Oak, and Shagbark Hickory
- ▶ Nesting birds of prey: Bald Eagles and Osprey





The property has been secured with the support of the Government of Ontario through the Greenlands Conservation Partnership, which helps conserve ecologically important natural areas and protect wetlands, grasslands and forests that help mitigate the effects of climate change. Through the Greenlands Conservation Partnership, a total of \$50 million will be invested over four years, including \$20 million from the Ontario government, and another \$30 million from other sources, such as individual donations and foundation support through the Nature Conservancy of Canada (NCC) and the Ontario Land Trust Alliance, and other levels of government.



Partners in Conservation

Beyond the perpetual stewardship of Kawartha Land Trust (KLT) protected properties, we also help landowners conserve the natural integrity of their own properties. Since 2018, KLT's Partners in Conservation project has helped 20 private landowners with the stewardship of over 2,400 acres of land.

Partners in Conservation helps interested landowners enhance and protect the natural features of their properties. The grant-funded program allows KLT to expand vital conservation efforts to other environmentally important areas in the Kawarthas.

By conducting a landscape analysis and sharing the information, Partners in Conservation can help property-owners understand the ecological value of their land. And, by developing property-specific stewardship guides, the program can recommend steps those landowners can take to conserve their ecologically significant land.

KLT also assists landowners by connecting them with other available resources, such as grant funding to support their stewardship work.

A 2021 Success Story

Last year, KLT's Partners in Conservation program assisted Randy and Jean Longfield, whose property sits nearby the Fleetwood Creek watershed.

Stream assessments of the area had identified hard breaks that disrupted the continuous flow of various streams. Among those identified breaks, was an aged culvert on the Longfield's property that prevented declining cold-water fish species, such as brook trout, from reaching vital spawning and nursery habitats.

KLT helped the Longfields find grant funding from Ontario Streams, The Trillium Foundation of Ontario, and Kawartha Conservation. That funding, combined with the funds the Longfields donated to the project, made it possible for the culvert to be lowered.

Working together, Randy and Jean Longfield and KLT's Partners in Conservation program successfully reconnected 300 metres of cold-water stream to another 400 metres of stream, allowing declining fish species to travel freely.



Looking Ahead: Burleigh to Lakefield Trail

Building on two decades of conservation in the Kawarthas, you can help KLT protect even more of the land you love in 2022.

Your gift today could create a 14-kilometre trail spanning from Lakefield all the way to Christie Bentham Wetland.

Thanks to people like you, Kawartha Land Trust (KLT) already has three properties — Christie Bentham Wetland, the McWilliams Property, and Ayotte's Point Woods — as part of this emerging trail network that will allow more people to make meaningful connections with the land.

Also, the Otonabee Conservation, the township of North Kawartha, and generous private landowners have properties, road allowances, and trails that could form other parts of the route.

Your gift today will ensure that a plan is created to make this massive trail a reality. With many properties and opportunities confirmed, your gift can help create a plan to get this exciting trail route established.

The potential routes would offer treasures from this ecologically rare “land between” where fertile Lawrence Lowlands meet the hard rocks of the Canadian Shield.

If you want to experience amazing forest cover with Scarlet Tanagers or walk past critically endangered Butternut trees, then this trail is for you and your family.

The same trail would preserve wetlands, which provide habitat for threatened Eastern Musk Turtles and cleans drinking water in the Kawarthas.

This is your chance to keep the ongoing conservation boom in the Kawarthas going strong. Together, we can build on the momentum supporters like you have helped to build over the last twenty years.

Your gift will drive the mapping phase of the trail development and the trail securement process as well. With your support today, this trail could lead to a conservation explosion in the land between — with even more trail creation in the Kawarthas!



Celebrating our Supporters

Supporters, donors, and volunteers are the heart and soul of every charitable organization — especially at Kawartha Land Trust (KLT). Your support makes an incredible difference!

KLT volunteers contribute their time, energy, and talents to all aspects of our work. As leaders, ambassadors, and skilled workers, they guide conservation work, steward our protected areas, work with landowners, help with events, provide governance, and so much more.

In 2021, KLT recognized the contributions of two Legacy Volunteers, Ron Awde and Cheryl Lewis, who have donated their time and talents to protect the land you love for ten years!

Legacy Volunteer: Ron Awde

Ron Awde first joined KLT as a director in 2011 and served as the Chair of the KLT Board from 2013–2014. Since stepping down as Chair in 2014, Ron has been an active member of KLT’s Development Committee.

Ron and his partner Robert Ertel have a Conservation Easement Agreement (CEA) with KLT on their Sheidow Farm property. This property, protected in 2017, is part of a large corridor of protected lands in Bethany Hills.

Ron has supported KLT’s work in many ways over the years. He is always willing to share his knowledge and skills for the benefit of KLT and we are so grateful!



Legacy Volunteer: Cheryl Lewis

Over the past 10 years, Cheryl Lewis has served on the KLT Board as Director, Vice-Chair (2013–2014), and Chair (2014–2017). Cheryl stepped down from the Board at the beginning of 2020 and is currently serving her second term as a trustee.

Cheryl has championed a significant amount of remarkable work throughout her involvement with KLT. Her efforts and achievements have made an immense and lasting impact on the organization. We appreciate her dedicated work!

Get Involved

As more people rediscover their love of nature and seek to protect the land they love, KLT hopes to welcome more new supporters to our teams. KLT relies on our passionate, hardworking volunteers and we are incredibly grateful for their support.

We look forward to connecting with you — our community of supporters, donors, and volunteers in person!

To learn more about the ways you can get involved and protect the land you love, visit our website at kawarthalandtrust.org/you-can-help/give-time/ or call us at 705-743-5599.

Recognizing Our Donors

So many amazing people just like you have joined a powerful movement to protect the land you love. Together, we are building on the momentum the KLT community has generated over the last 20 years. Thanks to our amazing supporters, donors, and volunteers KLT has created a conservation boom in the Kawarthas!

Bedrock Land Donors

Jones Family
Kawartha Conservation Authority
Mike Wilson
Patricia & David Morton
Ralph McKim & Jean Garsonnin

Forest Level Donors >\$100,000

Michael Young Family Foundation
Ralph McKim & Jean Garsonnin

Tree Level Donors \$50,000-\$99,999

Blidner Family Foundation
Anonymous

Sapling Level Donors \$25,000-\$49,999

Bill and Betty Morris Fellowship of Man Charitable Foundation *in honour of Marianne Rogers*

Seedling Level Donors \$10,000-\$24,999

Barron Cowan Foundation
Bob & Mary Hartley
Dawn Adrienne Berney & Christopher Geggie
Don Ross
Gainey Foundation
Jim & Sandra Pitblado
McWilliams Family Foundation
Patricia & David Morton
Robert & Nancy Martin
Scott Wootton & Catherine Kirk
Susan Fisher & Firoz Ahmed
Victoria Ross

Sprout Level Donors \$5,000-\$9,999

David & Sharon Cation
Jo Anne's Place
John & Ann Ambler
John Desbiens, Cambium Inc.
Kate Ramsay
Pitblado Family Foundation
Jones Family
Townsend Family Foundation
Al Sippel & Margo Tant

Root Level Donors \$1,000-\$4,999

Alec & Lexie Gowland
Alexina (Lexy) Cameron
Anne Shepherd, *in memory of Peter Shepard*
Barbara Heidenreich
Barbara Herring
Barbara McGregor
Bob Woosnam & Gill Fisher
Dr. Bruce Cole
Bruce Kidd
Carol & Ralph Ingleton
Carol Gray
Cherney family partners, *in memory of Brian Mickey*
Chris Appleton & Nancy Austin
Dr. Dave Heaton
David Marshall
Donald Walter
Environment Council For Clear, Ston(e) & White Lakes
Eric Howe
Dr. Erica Nol
Gerald Hunt
Hendren Family
Jane Zeidler
Janet & Yves Lafortune
John & Diane McPherson
John Ryder

In 2021, donors to Kawartha Land Trust ensured more land was protected, more stewardship and restoration projects were implemented, and more of the Kawarthas was made available for safe, environmentally-responsible public access. Thanks to each and every one of you for protecting the land you love!

Joshua Richardson-Duffy, *in honour of Peter & Nancy Richardson*
Joyce & Frederick Zemans
Julia Drake
Karen Higgins
Linda & Alan Slavin
Margaret Zeidler
Mark McLean
Mark Strickland
Meric Koksall
Nil Lavallee
Paul & Kathy Downs
Richardson/Duffy Family
Ronald Awde & Robert Ertel
Roslyn & Tim Moore
Sara & Frank Nichols
Sheila Thompson
Stephanie & James Forrester
Stony Lake Heritage Foundation
The Klein-Panneton Foundation
Dr. Tony Tilly
Walter & Marjorie Shephard
Warren Dunlop & Dr. Janet Kelly
Anonymous (2)

Seed Level Donors up to \$999

Adam Burns
Aileen Crowne, *in honour of Kenneth Hyde*
Al Jackson, *in memory of Barbara Carlstrom*
Alan Brunger, *in memory of Albert Chase*
Alan Cavell
Alan Woods
Allan & Diane Ingram
Alan & Jane Stewart, *in memory of Lorne Kelsey*
Aleks de Oliveira, *in memory of Lorne Kelsey*
Andrew Laing

Andrew Westcott
Angus Milne
Ann Davidson, *in honour of Thomas Purves*
Anna Lee & Jeremy Ward
Anna Maria Buxton
Anne & Walter Bathe
Anne Cooke
Anne Morawetz
Arthur & Tatiana Atkinson & Friends
Arun Brar
B. June Cooke
Barb & Phill Rimmer
Barbara Brandon
Barbara LaPerriere
Barbara Mann, *in memory of Lorne Kelsey*
Barbara Roesch
Barbara Znamirovski & Stephen Bocking
Barry & Arlene Moore
Barry Sutton
Barton Feilders
Becky Prokipcak & Barry Saville
Becky Walker
Bern & Janie Kelly
Bernard Hellen
Bert Weiss
Big Pulnam
Bill Crins
Blair Mackenzie
Blake Morrison
Bradley Jacobson
The Dunn Family
Brian Duffy
Brian Kelsey, *in memory of Lorne Kelsey*
Brian Lindsay
Brian Morrison
Brian Potter
Dr. Bruce Gibson
Caitlin Martin
Cameron Bruce
Cara Murray
Carla Salvador

Recognizing Our Donors (continued)

Carol & Don Willcock, <i>in memory of Susan MacLean</i>	Don & Cathie Carter, <i>in memory of Kenneth West</i>	Gerry Sparrow	John & Lorna Ferguson
Carol & Ralph Ingleton	Don & Sue Westbrook	Gisela Reichert	John & Penny Lewis
Caroline Tennent	Donald Sutherland	Gordon Ross	John Bick
Carolyn Coplen	Donna Sally	H.A. Fields & K. Stephenson-Fields	John Bruce
Carson Gemmill	Doreen Drimmel	Heather Brooks-Hill & Jeremy Carver	John Bush, <i>in honour of Paul Follett</i>
Catherine Holt & Tara Hunt	Dorothy Cook, <i>in honour of Kenneth Hyde</i>	Heather Coutu	John D. T. Hill
Catherine Owens	Doug & Mary Smith	Heather Jean Elliott	John Geale
Catherine Medici	Doug Michaelides	Heather Wheat	John Good & Doug Andrews
Catherine Staples	Drew & Michelle Monkman	Heidi Groff	John McGregor
Cathy Douglas	The Dunn Family	Helen & Gerald Finley	John Newediuk, <i>in memory of Ken Hyde</i>
Chad Colston	Dylan Radcliffe	Helen Batten	Dr. John Platt & Ms. Judith Platt
Charles Parlagreco	Ed Duncan	Hendren Family (Mike & Danielle)	John Poch
Charlie & Hayley Martin	Elaine Axt, <i>in memory of Kenneth West</i>	Hilary Young, <i>in honour of Peter and Jane Young</i>	John R. Rogge
Cheryl Lewis	Elaine Blampied	Hugh Aldis	John Reid
Christie Nash	Elaine Gold	Hugh Pollock	John Tate
Christopher McCleave	Beth & Bob Halliday	Ian & Janice Smith	John Vegter
Clare Byer	Elizabeth & David Thompson	Ian & Sandi Deslauriers	Dr. John Wadland & Dr. Julia Harrison, <i>in honor of Ralph McKim</i>
Cliff Howewood	Elizabeth Bray	Ian Attridge & Susan Sauve	Jonas Brand, <i>in memory of Helen Mary Ray</i>
Colin Taylor	Elizabeth McDonald	Ingrid Kleysteuber, <i>in memory of Kenneth West</i>	Josephine Mewett
Colleen & Andrew Hoggarth	Elizabeth Pindar	Ingrid & Michael Nolan	Joyce Anderson
Cora & David Whittington, <i>in memory of Helen Mary Ray</i>	Elyse Sawdon	Irene Fedun	Judith Jordan
Cynthia Goodchild & Colin Kinnear	Emmalea Davis	Irene Mitrana	Judy Finch & Bert Lloyd
Cynthia Kapke & Dennis Murray	Eric Monkman	J.C. Edgar Wood	Judy Pavan, <i>in memory of Lorne Kelsey</i>
Cynthia Kirkland Odell	Erin McGauley	J. Gnocato, <i>in loving memory of Susan MacLean</i>	Julia Madden
Dani Shaw	Evan Thomas	J. Mark Stiles	Julia Wallace
Daniel Nadeau	Fiona McKay	James (Jimmy) O'Brian*	Julie and Kirk Dillon, <i>in memory of Lorne Kelsey</i>
Dave Beedell	Colleed Hoggarth, <i>in memory of Brian Mickie</i>	James Darling, <i>in memory of Peter Thompson</i>	Julie McGill
Dr. David & Ms. Patricia Swales	Fran & Karl Blumfald	James Wilkes	June & Wayne Schroeder
David & Patricia Kent	Hellen Family, <i>in honour of Paul Hellen</i>	James Young	Karen Ridley
David Bell	Francis Richard	Jamie & Patsy Anderson, <i>in memory of Ken Hyde</i>	Kate Zeidler, <i>in memory of Ken Hyde</i>
David de Launay	Frank Duncanson, <i>in memory of Ken Hyde</i>	Janet & David Klein	Katherine MacIsaac
David Marshall	Gael Morrison	Janet Reid	Katherine Orgill
David Morrison & Alena Heitlinger	Gail Brown, <i>in honour of Gord and Joan Wolsey-Michie</i>	Janice McElrea & Lorraine Miller*	Kathy Balme, <i>in memory of Lorne Kelsey</i>
Dean Haggerty	Gail Grant	Janis Goodman, <i>in memory of Ken Hyde</i>	Kathryn A. Sheridan
Deb Scott	Gail McLaren	Jay Nimigon	Kathy & Don Gillespie
Deborah Pearson	Gail Payne	Jeff Fleischmann	Katrina Wisniewski
Dena Heming	Gary Allen	Jeffery Walters	Kenneth & Anne Toms
Denise Cooling	Gary Graham	Jennifer & Max DeBues	Kenneth Abraham
Dennis Carter-Edwards	Gary Heuvel	Jerry & Cynthia Collins	Kevin Kimsa
Dennis Voigt	Gayle Simpson	Jill & David Brett	Kim & Mark Zippel
Derryk & Diane Wolven	Geoffrey Chase, <i>in memory of Carman Harvey Chase</i>	Jim & Sylvia Cashmore	Kip Millitz
Deryck & Heather	Geoffrey Howson	Jim Hendry	Kirsten Armbrust, <i>in honour of Ethan Paynter</i>
Robertson & Family	George & Ann Gillespie	Jim Smith	Klaus Dietrich
Dianne Everson	George Maynard	Joanne Schaefer, <i>in memory of Ken Hyde</i>	Laura Clements
Dick Risk & Gail Morrison	Gerald LeRoy	John & Cindy Kintare	Lauren Vaughan
Dinnie & Jim Baker, <i>in memory of Ken Hyde</i>	Geri Blinick		
Don & Anna Husack			

Lawrie & Hamlyn
 Keillor-Faulkner
 Les & Linda Unrau
 Leslie & Christopher Bailey
 Leslie Fraser
 Linda Lloyd
 Lois Watson
 Loraine DeGenova-Lalonde
 Lorne & Pat Chester
 Lorne Dixon
 Lou & Judy Probst
 Lynn Patterson, *in memory of Helen Mary Ray*
 Lynne Bullard, *in memory of Robert Browne*
 Marg Weigand
 Margaret Embree
 Margaret Harper
 Margaret Ray, *in memory of Helen Mary Ray*
 Margot Smith
 Marilyn Freeman
 Marion & Jim Daniels
 Mark Federman, *in memory of Kenneth West*
 Mark Maitman
 & Dale Sutton
 Marla Williams
 Marlys Kerkman
 Marnie Clement
 Martha Hunt
 & Rachel Corbett
 Martin & Kathy Parker
 Martyn Obbard
 Mary & Gord Bullied, *in memory of Helen Mary Ray*
 Mary Davis, *in memory of Helen Mary Ray*
 Mary Steele-Thomas
 Mary Tattersall
 Mary Thiess
 Mary-Anne Johnston, *in memory of Lorne Kelsey Marylyn White*
 Mary-Margaret Boone
 Matt Dunn
 Matthew Gerrits
 Meadow Carlstrom, *in honour of Barb Carlstrom*
 Megan Kenzie
 Melanie Yach
 Melissa Cameron
 Michael Fox

Michael Marcucci
 Michael McMurtry
 Mieke Schipper
 Mollie Penn
 Molly Stevens
 Murray & Angela Thompson
 Murray & Lisa Kuntze, *in memory of Arthur Huycke*
 Murray Leadbeater
 Murray MacAdam
 N. Grant & Andrea Woolsey, *in honour of Robert Browne*
 Nancy Hewitt, *in memory of Lorne Kelsey*
 Naomi Ecob
 Nathalie Rockhill
 Neil Hayward
 Nikita Gris & Julia Khon
 Nora Mickee, *in memory of Brian Mickee*
 Norah Catherine Huycke, *in memory of Frederick AM Huycke*
 Pamela Bronson
 Patricia Bourne
 Patricia Potter
 Patricia Rattenbury
 Patricia Wilson
 Patrick Mackenzie
 Patti Watson
 Paul & Paula Ackerley
 Paul Hellen
 Paul Mitchell
 Paul Vigneux
 PayPal Giving Fund Canada
 Penny & Robert Little
 Peter & Chick MacLoghlin
 Peter & Jane Darling, *in memory of Peter Carr Thompson*
 Peter C Hill
 Peter Ross
 Petra Unger-Feldhaus & Georg Unger
 Philip & Janis Niblett
 Philip Hunt
 Philip Stiles
 Philippe Furrer
 R.V. Anderson Associates Limited, *in memory of Ken Hyde*
 Randall Longfield
 Randy Northey

Randy Wilson, *in memory of Lorne Kelsey*
 Ralph Banks
 Richard & Diane Raper
 Richard & Renee Scott
 Richard Sutherland & Carolyn Ketcheson
 Rick & Kristin Baldwin
 Rob & Eva Kennedy
 Rob & Sally Thomas
 Rob Davis
 Roberta King
 Robin & Hermione Rivison
 Rolf Romberg
 Ron Haney
 Ron Lalonde
 Ronald Fotheringham
 Ronald Gow
 Rose Gibbons
 Rosemary & Ed Addison
 Rosemary MacAdam
 Rudy Massimo
 Ruth & Mike Armstrong
 Ruth Strunz, *in honour of Marion Habermehl*
 Ruth Treloar
 Sandra Wyatt, *in memory of Bryan Wyatt*
 Sarah Nelson & Wayne Marquis, *in memory of Peter Thompson*
 Sarah Pryse-Phillips
 Sean Courtney
 Senwung Luk
 Sharon Bradimore
 Sheila Britton
 Sheila Gordon-Dillane & Jim Dillane
 Sheila Nabigon-Howlett, *in memory of Lorne Kelsey*
 Sheila Perry, *in honour of Alicia and Walter Perry Shelagh Durno*
 Sherry & Larry Kerr, *in memory of Helen Mary Ray*
 Silvia Strobl
 St. Peter's On-The-Rock
 Clergy Cottage
 Stephan Ragaz
 Stephanie Forrester, *in memory of Lorne Kelsey*
 Stephanie Kirschner
 Mattern & Fritz Mattern

Stephen Hill & Kim Curtin
 Stephen McMurtry
 STLE Hamilton Section, *in memory of Helen Mary Ray*
 Susan P Bell-Gastle, *in memory of Lorne Kelsey*
 Susan Liebel
 Susan & Dick Plant, *in honour of Lyn and Roy Braun*
 Susan & Dick Plant, *in honour of Sharon & Wayne Stafford*
 Susan & Dick Plant, *in honour of Jean and Darrell Paumier/Hayes*
 Susan Schnurr, *in memory of Ken Hyde*
 Suzanne Buckingham-Jarvis
 Suzanne Galloway
 Sylvia Arsenault
 Tammy Brown
 Tara Harrington
 Tasmin Rajotte
 Thea Jenkins
 Thomas & Vivian Hutchinson
 Dr. Thomas Miller & Ms. Barbara Chisholm
 Thomas Unrau, *in honour of Cedar & Sorrel Unrau*
 Timothy Fellowes, *in memory of Ken Hyde*
 Tom & Margie Davidson
 Tore Bjerkek
 Trina Macrae
 Una Buro
 Virginia Thompson
 Walter & Juanita Murray
 Wendy & Peter Marrs
 Wendy Lambie
 Wilhelm Haust
 William Denton
 William Hewitt
 William Snowden
 William Steffler
 Anonymous (8)
 Anonymous, *in memory of Ken Hyde*

We honour our donors' wishes to remain anonymous.
 Only those who gave consent are listed in this Annual Report.

Kawartha Land Trust Properties 2021

Owned Properties

1 Ayotte's Point Woods | 77 acres (2017) **Donor: Jane and Peter Darling & Family**

This property includes upland and lowland cedar forest, beautifully managed Oak stands, and some seasonally flooded areas full of wildlife.

2 Balsam Lake | 72 acres (2021) **Donor: Kawartha Conservation**

This new property sits within a Provincially Significant Wetland providing excellent habitat for rare and at-risk species. On it, there exists a patchwork of shallow, slow-moving watercourses and temporary water bodies that weave through a variety of unique wetland ecosystems.

3 Ballyduff Trails | 156 acres (2021) **Donors: Ralph McKim and Jean Garsonnin**

This property was donated to KLT in 2021, while the remaining McKim-Garsonnin property will continue to be protected through the CEA. As part of the glacially formed Oak Ridges Moraine, the property contains a wetland that is the source of a cold-water stream at the headwaters of Fleetwood Creek. The ecologically significant land borders the 900-acre Fleetwood Creek Natural Area.

4 Big (Boyd/Chiminis) Island | 1,142 acres (2015 & 2021) **Donors: Mike and Terry Wilson**

Big (Boyd/Chiminis) Island in Pigeon Lake is the largest undeveloped island in the Kawarthas. As of 2021, the entire island is protected by KLT. The property is an ANSI and home to wetlands, diverse forests, and a wide variety of plant and wildlife species. The island is referred to as Big, Boyd, and Chiminis, as the Indigenous Peoples of the region have called it for millennia.

5 Cation Wildlife Preserve | 668 acres (2018) **Donors: David and Sharon Cation**

Previously logged, the forest includes species such as Poplars, Birches, juvenile Maples and Ironwood trees. The Staghorn Sumac, Wild Red Raspberry and Blackberry bushes found throughout the property area provide an excellent food source for wildlife, and there are signs that White-tailed Deer, Coyotes, Black bears, and even Moose have visited the property.

6 Christie Bentham Wetland | 137 acres (2020) **Donors: Purchased with support from the community**

In 2020, with support from the community, KLT purchased the Christie Bentham Wetland. The property features over 1,200 feet of natural, undisturbed waterfront on Clear Lake. The PSW on the property contributes to the water quality of surrounding Bays and Clear Lake.

7 Dance Nature Sanctuary | 99 acres (2006) **Donor: Alice Sharpe**

This property includes a portion of the Provincially Significant Wetland (PSW), Moore Lake Complex, and Lakefield Crevasse Fillings, an Earth Science Area of Natural and Scientific Interest (ANSI). A wide variety of plants grow on this property which features diverse wildlife habitat.

8 East Syndicate Island | 5 acres (2006/2018) **Donor: Norman Cowan**

This island is the last large, undeveloped island on Stony Lake, and it is part of a wildlife corridor between the granite north shore and the limestone south shore.

9 Emily Creek Property | 714 acres (2010) **Donor: Emily Creek Duck Club**

This extensive property is in a semi-wilderness setting and it is a haven for wildlife. The property is part of a PSW and ANSI. Emily Creek meanders through the property which includes mixed bog, fen, and swamp habitats.

10 Falls | 178 acres (2013) **Donors: Bruce and Anne Falls**

These lands are near the headwaters of the Crowe River. Cliffs, streams, upland forests and swamps all contribute to a rich bird and plant life on this part of the "Land Between" transition zone between the limestone bedrock of southern Ontario and the granite of the Canadian Shield.

11 Fell Wetland | 50 acres (2019) **Donor: Allan Fell**

The Fell Wetland is relatively untouched by human activity and is home to a forested wetland and cattail marsh. It lies within a wetland complex and contains a portion of a PSW which provides an excellent habitat to a biodiversity of flora and fauna.

12 Ingleton-Wells | 73 acres (2011) **Donors: Ingleton and Wells families**

This property contains evidence of different eras of settlement. This land includes open fields, an orchard as well as upland forests, swamps and open areas providing diverse habitats for wildlife. There is a trail network for hikers that connects with neighboring properties, including Viamede Resort and KLT's Jeffrey-Cowan Forest Preserve.

13 Jeffrey-Cowan Forest Preserve | 137 Acres (2018) **Donor: Norman Cowan**

This property contains a significant forest of large older growth White Pines and White Oak (rare to the area). It is an outstanding iconic site that typifies the Stony Lake area. It offers scenic views from the highest point surrounding the lake and is one of the largest undeveloped shoreline areas on Stony.

14 The Jones Woodlot | 50 acres (2021) Donors: Ross Jones and Marilyn Falls

Adjacent to the Fell Wetland system, this new property contributes to the connectivity and biodiversity throughout an otherwise highly disturbed agricultural landscape. The property contains mixed swamp, Cattail, and Willow Marsh as well as upland forest dominated by White Ash, Sugar Maple, and Basswood. Over 25 species of birds have been noted in the wetland system including the Northern Flicker, Black-billed Cuckoo, and Eastern Bluebird.

15 Keppler Nature Sanctuary | 295 acres (2020) Donors: Christine and Hans Keppler

The Keppler Nature Sanctuary contains a sizable wetland, mixed canopy forest, permanent streams and numerous vernal pools. It is adjacent to more than 600 acres of Crown Land. A wetland network, which is part of the Crowe River Watershed, as well as diverse forest habitat are maintained inside this stretch of land.

16 McWilliams Family Property | 32 acres (2020) Donors: John and Susan McWilliams

The McWilliams Family Property is predominantly dominated by granite bedrock. The forest on the property is part of a forested corridor which extends south towards Young's Point. The property contains a portion of a PSW which contributes to the water quality of surrounding waterways and provides vital habitat to breeding fish, birds and numerous Species at Risk.

17 Morton Nature Sanctuary | 133 acres (2021) Donors: Patricia and David Morton

The Morton Nature Sanctuary features 1.5 kilometres of undeveloped, natural shoreline, which contributes to water quality and provides key habitat and shelter to wildlife in the area. Home to at least two species at risk, the property features a wide variety of mature trees, including stands of Sugar Maple and Hemlock. Old growth pines are also found at the Morton Nature Sanctuary.

18 Nogie's Creek | 100 acres (2021) Donors: Kawartha Conservation

This property sits six kilometres north of the mouth of the creek and is only accessible by water. It has been identified as a very important piece of land in the natural landscape. The mixed habitat types of ecosystems on the property are used by numerous permanent and migratory species including species at risk and species of interest.

19 van Nostrand | 103 acres (2020) Donor: John van Nostrand

The van Nostrand property is located on the shoreline of Rice Lake at the mouth of the Indian River. The majority of this property is coastal Provincially Significant Wetland (PSW) dominated by Cattail marsh, which hosts a diversity of species. It is an important corridor of connectivity along the shoreline of Rice Lake and the Indian River.

20 Vincent Woods | 102 acres (2010) Donors: Les and Sandy Vincent

This forested property is located up a small creek from Salmon Lake. It contains a rare species of frog, impressive old growth trees, borders a wetland, and is surrounded by Crown Lands.

21 Wootton-Kirk | 33 acres (2018) Donors: Scott Wootton and Catherine Kirk

This property is forested primarily by Sugar Maple trees. However, there are a few other species of deciduous trees including large-tooth aspen, White Ash and Red Oak. It contains two wetland units of the Fraser Property Wetland Complex, a large wetland with diverse vegetation.

van Nostrand



Kawartha Land Trust Properties 2021

Conservation Easement Agreement (CEA) Properties & Management Agreements

A Elliott Property | 139.7 acres (2009) **Donor: Heather Elliott**

The CEA protects the biodiversity and the PSW found on this property that acts as core nurseries for fish, turtles and other wildlife on the lake. A “disappearing” stream makes this an important area to protect.

B Glen Burn (Howson) Property | 100 acres (2010) **Donor: Major Donald Howson**

This property is the highest point in Otonabee Township. A CEA protects the thousands of trees the donor planted on the property over the last decades. It contains a geological area of ANSI for its reversed direction drumlins, creek headwaters, and active agricultural fields.

C McKim-Garsonnin Property | 84 acres (2011) **Donors: Ralph McKim and Jean Garsonnin**

The CEA protects this large property with extensive views at the headwaters of Fleetwood Creek on the Oak Ridges Moraine. It protects this rolling forested landscape and restored prairie plant species and complements the adjacent conservation holdings at the Fleetwood Creek Natural Area.

D Pine Ridge | 44 acres (2018) **Donors: Bob and Mary Hartley**

This CEA protects Pine Ridge, a property that sits along the Hogsback Esker west of the Pigeon River. It is covered by forest and contains muscledwood trees, an uncommon discovery as this species does not usually live this far north. The property features an eskar ridge of stratified sand and gravel.

E Schipper (Gamiing Nature Sanctuary) | 77 acres (2017) **Donors: Mieke Schipper & Family**

This property, known as the Gamiing Nature Sanctuary, includes 1,200 feet of undeveloped shoreline on Pigeon Lake. It also includes an ANSI and a PSW that is habitat for Species at Risk such as Least Bittern and Blanding’s Turtles.

F Sheidow Farm (Awde-Ertel), 203 acres (2014) **Donors: Ron Awde and Robert Ertel**

This property is part of a larger corridor of protected lands in Bethany Hills. It is recognized in the official plan for the City of Kawartha Lakes as having “significant wildlife and woodland habitat.” On this property woodland corridors are being restored on 120 acres specifically designated for this purpose.

Management Agreement

G John Earle Chase Memorial Park, 400 acres (2018) **Donors: Ralph and Evelyn Chase**

KLT and Trent Severn Waterway, Parks Canada signed an agreement naming KLT as the land steward for this property located at Gannon’s Narrows in Trent Lakes. It has splendid views overlooking Pigeon Lake, mature Maple forests and wetlands that are bursting with life.

Schipper, Gamiing Nature Sanctuary



Kawartha Land Trust Financial Statement of Operations and Fund Balances

STATEMENT OF OPERATIONS

Year ended December 31	2021	2020
Revenue	\$	\$
Grants	593,610	691,373
Donations	499,450	799,630
Other	217,625	83,664
Donations of Land*	2,658,000	655,000
Total Revenues	3,968,685	2,229,667
Expenses	\$	\$
Community Engagement	17,612	21,374
Fundraising	41,112	7,918
Direct Cost of Land Stewardship & Securement	252,886	133,274
Operations	90,831	78,128
Salaries & Benefits	508,223	390,741
Total Expenses	910,664	631,435
Excess of Revenue over Expenses	3,058,021	1,598,232

Statement of Fund Balances (As at December 31)

	2021	2020
Revenue	\$	\$
Capital Fund - Protected Land	13,912,113	11,244,117
Securement & Stewardship Funds	2,662,293	2,262,856
Operating Fund	600,371	609,783
Balance - End of Year	17,174,777	14,116,756

Meet the team

Trustees

Alec Gowland	Don Gillespie	Dr. Keith Knott
Bill Morris	Donald Ross	Ralph McKim
Blair MacKenzie	Evan Thomas	Roslyn Moore
Cheryl Lewis	Geri Blinick	Rudy Massimo
Chris Appleton	John Good	Tony Tilly
David Young	Kate Ramsay	

Trustees / Directors

John McWilliams, Chair	George A. Gillespie, Treasurer
Al Sippel, Vice Chair	Paul Downs, Director
Eva Kennedy, Director	Randy Northey, Director
Eric Howe, Director	

Committees of the Board

Finance & Audit Committee

George A. Gillespie, Chair
John Kintare, E.D.
Don Gillespie
Paul Downs
Randy Northey

Investment Committee

George A. Gillespie, Chair
John Kintare, E.D.
Al Sippel
Alec Gowland
Doug Eberlee
Eric Howe

Nominating Committee

Cheryl Lewis, Chair	John McWilliams
Bill Morris	Kate Ramsay
Eric Howe	

Staff

John Kintare, Executive Director	Hayden Wilson, Land Stewardship Coordinator	Krista Kartick, Administrative Assistant (Special Projects)
Thom Unrau, Land Stewardship Manager	Lexi Armstrong, Land Stewardship Inventory Technician	Veronica Price-Jones, Partners in Conservation Stewardship Technician
Anna Lee, Operations Manager	Brianna Buchan, Farmland Conservation Technician	
Tasmin Rajotte, Development Manager	Kaitlyn Devlin, Administrative Assistant	Sé Keohane, Financial Administrator
Patricia Wilson, Community Conservation Coordinator	Abby Godja, Partners in Conservation Technician Co-op	
Rachel Rutherford, Marketing & Communications Assistant		

Lead Property Stewards

Ayotte's Point Woods

Jane Darling

Big (Boyd/Chiminis) Island

Warren Dunlop

Jim Dillane

Dave Heaman

Emily Creek

Dennis Voigt

Norm North

Fell

Ham Keillor-Faulkner

Ingleton-Wells

Richard Raper

Jeffrey-Cowan Forest Preserve

Ed Duncan

Ian Smith

John Earle Chase Memorial Park

Mike Boyson

Ian Deslauriers

Marty Obbard

Jones

Ham Keillor-Faulkner

Vincent Woods

Norm Kapitain

Nancy Lemire

Brian Lemire

Wooton-Kirk

Aileen Rapson

Securement Committee

Bill Crins, Chair

Barbara Heidenreich

Fiona McKay

Marie Windover

Barton Feilders

Andrew Marshall

Staff: Anna Lee, John Kintare, and Thom Unrau

Stewardship Committee

Warren Dunlop, Chair

David Bell

Ham Keillor-Faulkner

Ralph McKim

Al Sippel

Erin McGauley

Marty Obbard

Mike McMurtry

David Marshall

Staff: Thom Unrau

Development Committee

Eva Kennedy, Chair

Ronald Awde

Marnie Clement

John Platt

Staff: John Kintare



KAWARTHA LAND TRUST

www.kawarthalandtrust.org

705.743.5599
info@kawarthalandtrust.org

