



Christie Bentham Wetland Project



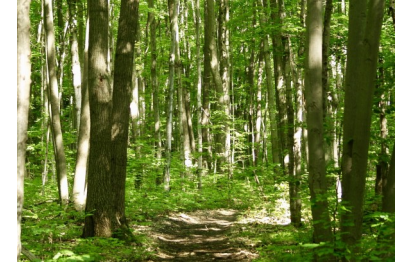
Size: 170 acres



Status: at risk of development

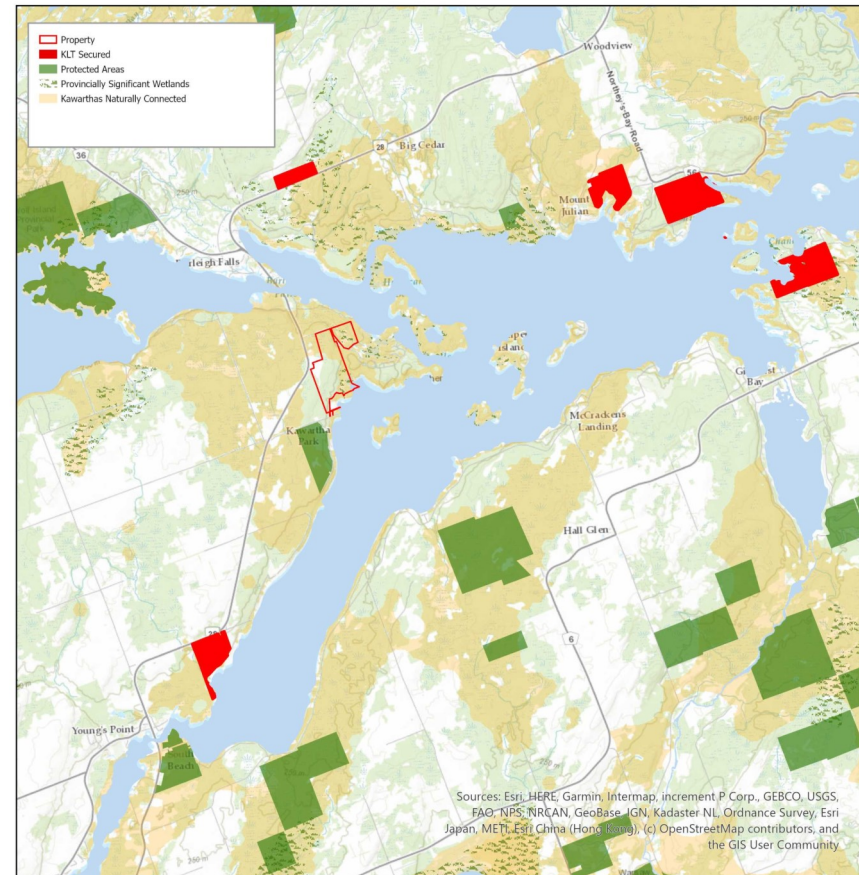


Funds needed for permanent protection: estimated \$1,000,000



Interesting Features

- 1,292 feet of natural, undisturbed waterfront on Clear Lake.
- Property identified in the Kawarthas Naturally Connected Preferred Scenario as an important piece of our natural landscape.
- Contains a portion of a Provincially Significant Wetland (PSW) which contributes to the water quality of surrounding Bays and Clear Lake and provides vital habitat to breeding fish, birds and numerous Species at Risk.
- Walking trails on site will remain open and be accessible from a public parking lot. These trails will form part of a network linking numerous protected properties in between Burleigh Falls and Youngs Point.



There are numerous building sites available on the property and other offers have been made. KLT is working with local residents to protect this property forever and keep its trails open for public use. We need your support by November 20th to make this happen.

Donations to Kawartha Land Trust are eligible for a charitable tax receipt and may be made by Cheque, Credit Card or Stock Transfer.

kawarthalandtrust.org

705-743-5599