



# Fleetwood Creek Sub-Watershed

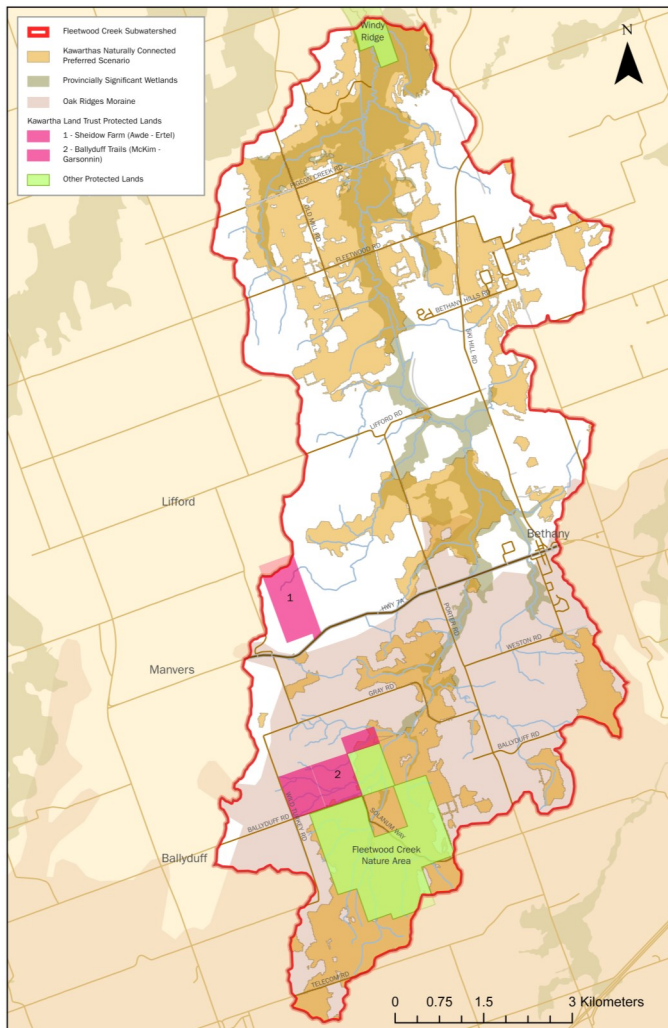
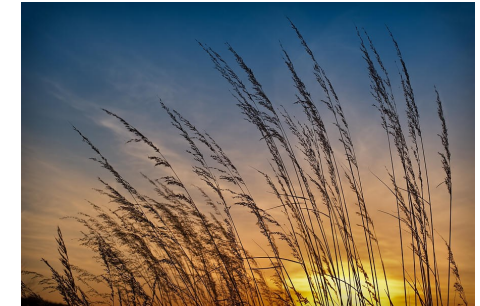
This connected landscape is founded on a mix of privately and publicly-protected lands, and private land stewardship:



➤ **1,742 acres of protected lands in the area, 466 acres is protected by Kawartha Land Trust.**

➤ **10 Stewardship on private lands projects:**

- Forest Enhancement
- Habitat Connectivity
- Invasive Species Management
- Tall Grass Prairie Restoration



## Interesting Features:

- The hills and streams surrounding Fleetwood Creek are identified as having an outstanding amount of naturally connected land, making for an intact wildlife corridor.
- Fleetwood Creek's great water quality was the only sub-watershed within the southern portion of the City of Kawartha Lakes to receive an "A" in Kawartha Conservation's watershed report card.
- The streams and creeks in this area are one of the best opportunities in the Kawarthas to improve habitat quality of cold water streams for species like Brook Trout.
- Fleetwood Creek is home to rare ecosystems such as tall grass prairies, and landforms such as eskers and kames that provide high quality habitat for many at-risk species.
- 2100 acres has been identified as Areas of Natural and Scientific Interest by the MNRF.
- Approximately 2300 acres of Provincially Significant Wetland is home to many common and rare species.

Project funded in part by:

